

iAeris

iAeris1 IAQ Detector



* Please read this manual carefully before using this product.

USER MANUAL

www.sysinnotec.com

**sysinno**

PACKAGE CONTENTS

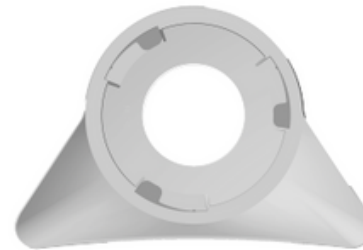
- iAeris main unit
- Adapter
- Main stand
- Wall mount

PRODUCT DESIGN / FEATURES

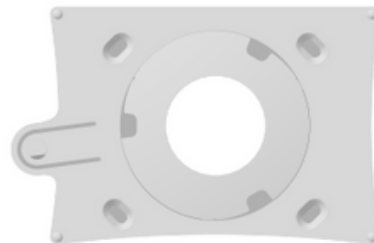
■ Front view



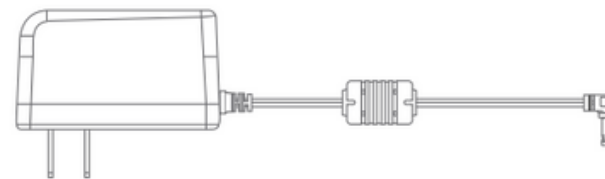
■ Stand



■ Wall Mount



■ Adapter



PRODUCT DESIGN / FEATURES

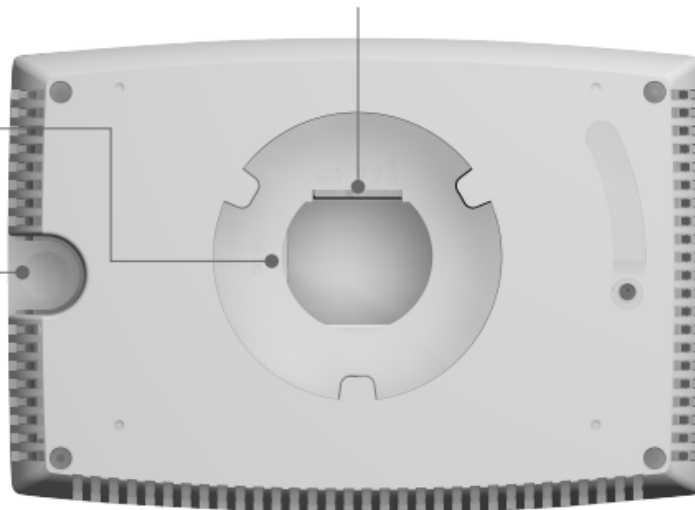
■ Back View

Communication interface

B- A+ NO1 NO2 COM

Power interface

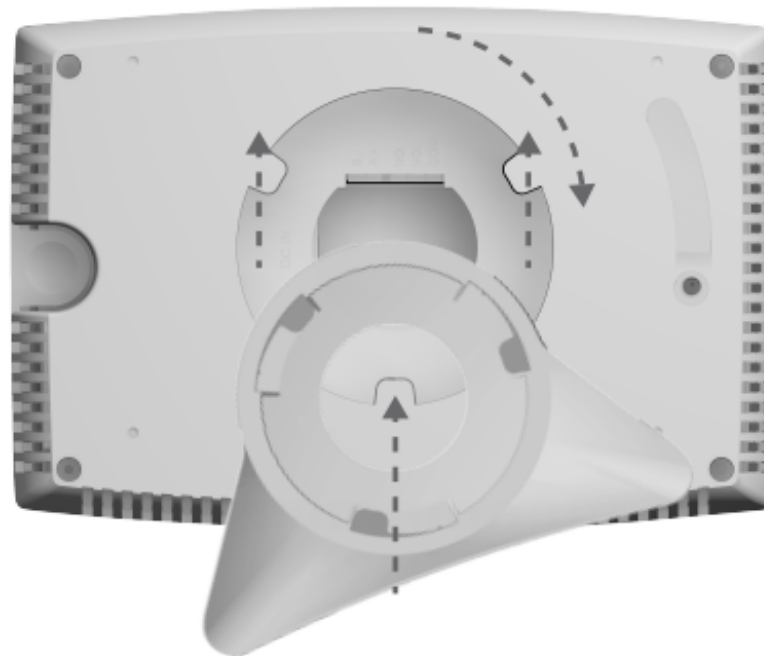
Power switch



- B- & A+: RS485 communication interface
- NO1 & NO2 (COM is common ground): Two sets of dry contact can be set according to customer's parameter requirements. When the specified measurement index is higher than the warning level, the dry contact can be used to activate connected corresponding external devices.

QUICK INSTALLATION GUIDE

■ Assemble the stand

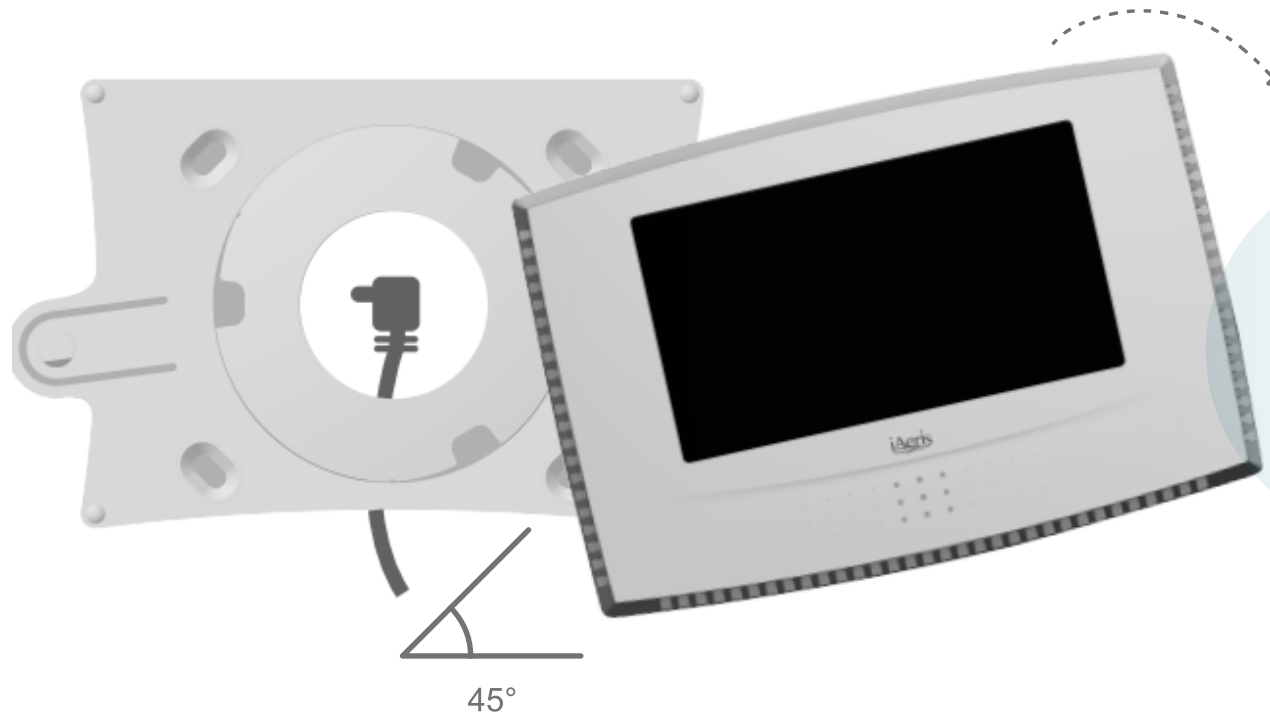


1. Align the notches on the stand with the latches on the back of the device.
2. Rotate the stand in a clockwise direction to complete the installation.

QUICK INSTALLATION GUIDE

Install at human breathing range (recommended height 1.5~2.5m).

■ Assemble the wall mount

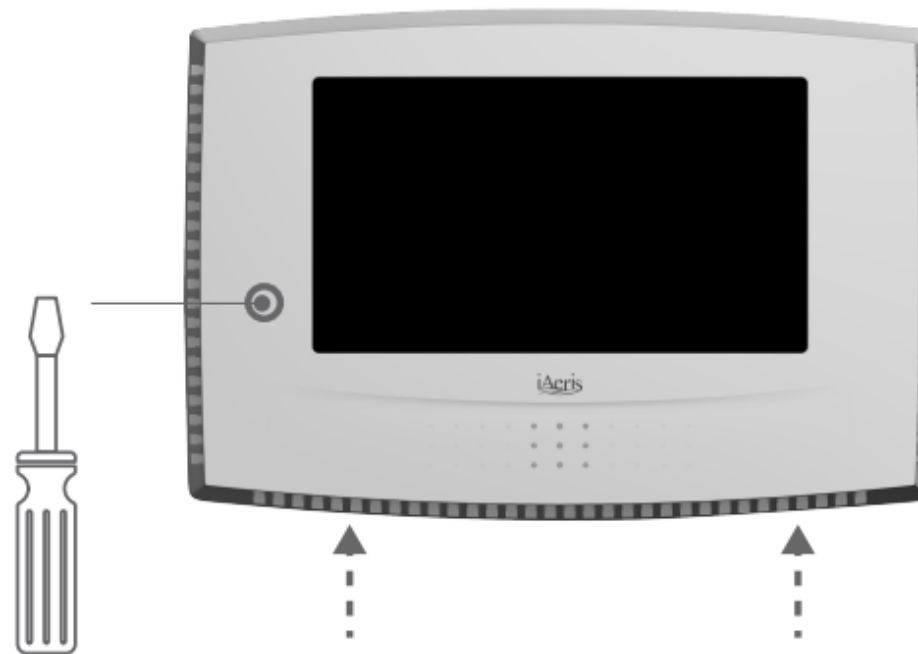


1. Fix the power cord and wall mount on the wall as shown above.
2. Rotate the device by 45 degrees counterclockwise to align with the latches on the wall mount.
3. Rotate the device in a clockwise direction to complete the installation.

QUICK INSTALLATION GUIDE

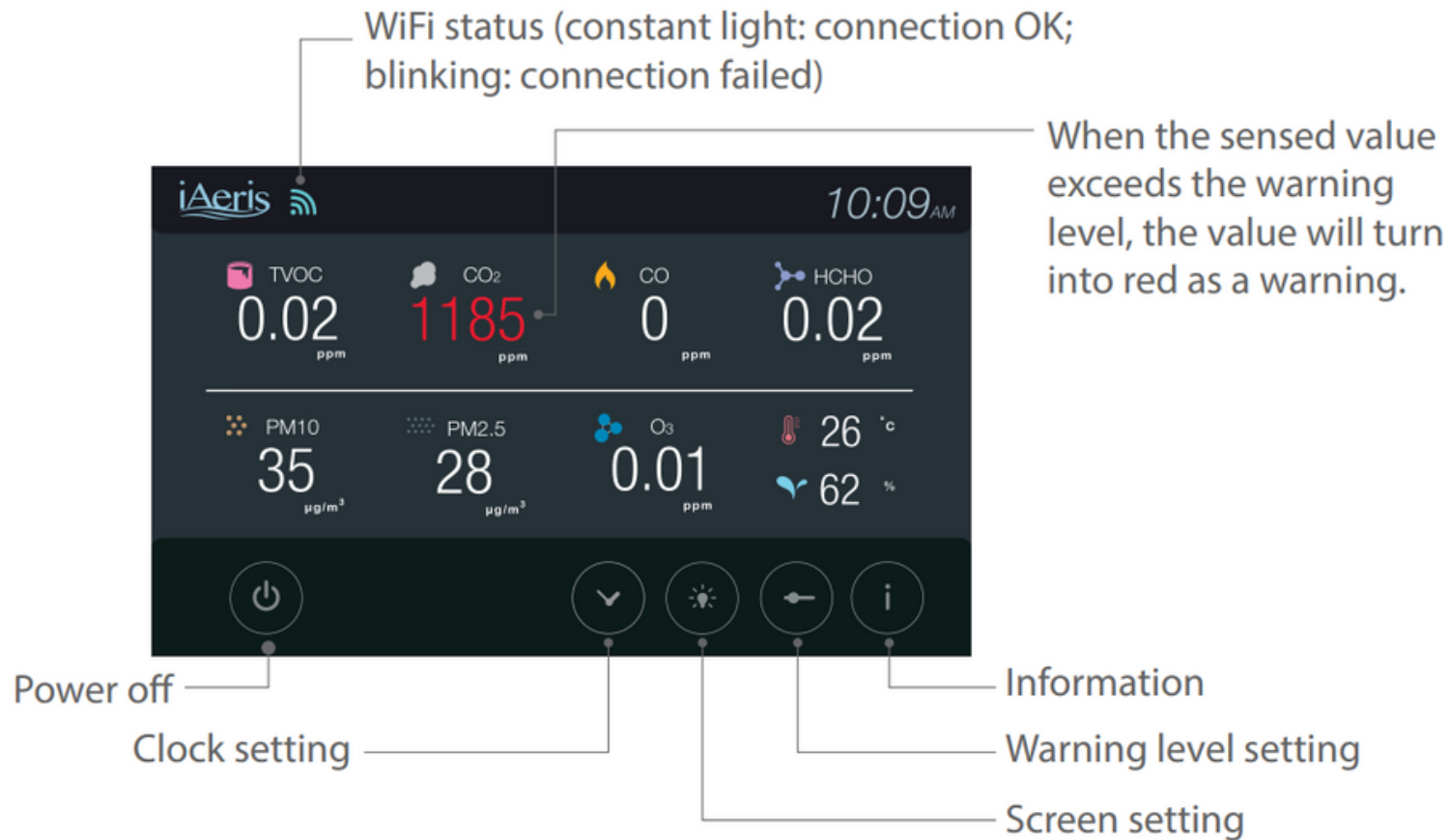
Install at human breathing range (recommended height 1.5~2.5m).

■ Disassemble from the wall mount



1. Remove the cover by pressing the concealed latches, as the arrows shown, with both hands simultaneously.
2. Insert a screwdriver into the small round hole on the left side of the screen, and turn the device counterclockwise to remove it.

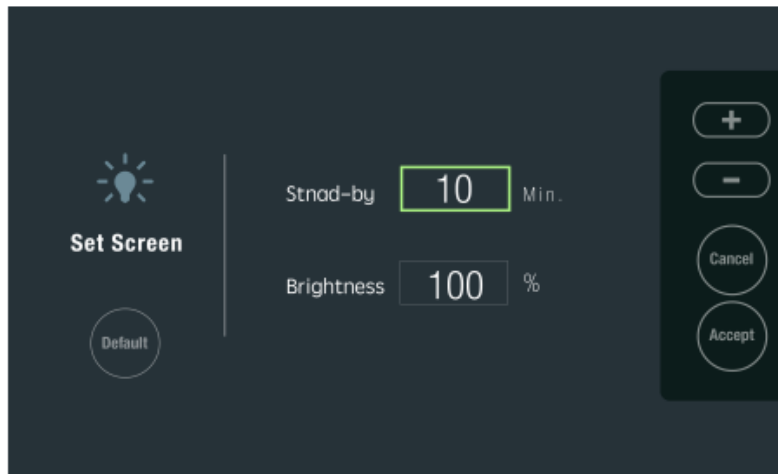
■ User Interface



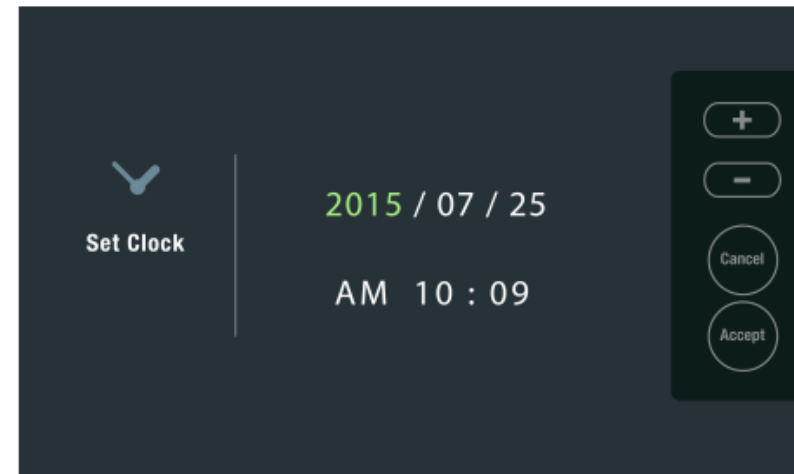
DEVICE SETTING

■ Device setting

Press the setting button on the main form screen to enter the sub-page to set various parameters.

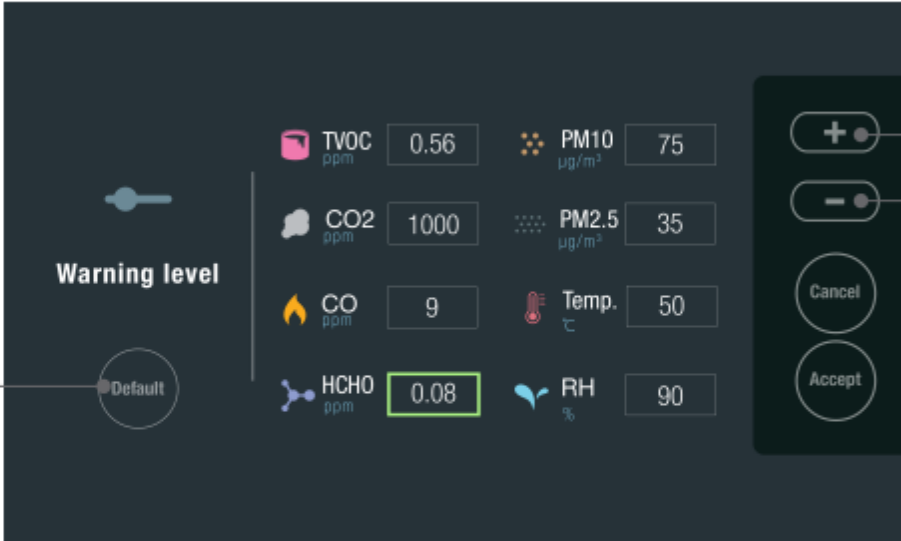


Set screen brightness and standby time



Set date and time

DEVICE SETTING



The screenshot shows a settings menu for 'Warning level'. On the left, there is a slider and a 'Default' button. The main area contains a grid of pollutant settings:

Index	Unit	Value
TVOC	ppm	0.56
CO ₂	ppm	1000
CO	ppm	9
HCHO	ppm	0.08
PM10	µg/m ³	75
PM2.5	µg/m ³	35
Temp.	°C	50
RH	%	90

On the right side of the settings, there are four control buttons: '+', '-', 'Cancel', and 'Accept'. The '+' and '-' buttons are labeled 'Increase' and 'Decrease' respectively.

Restore default settings — Default

Increase

Decrease

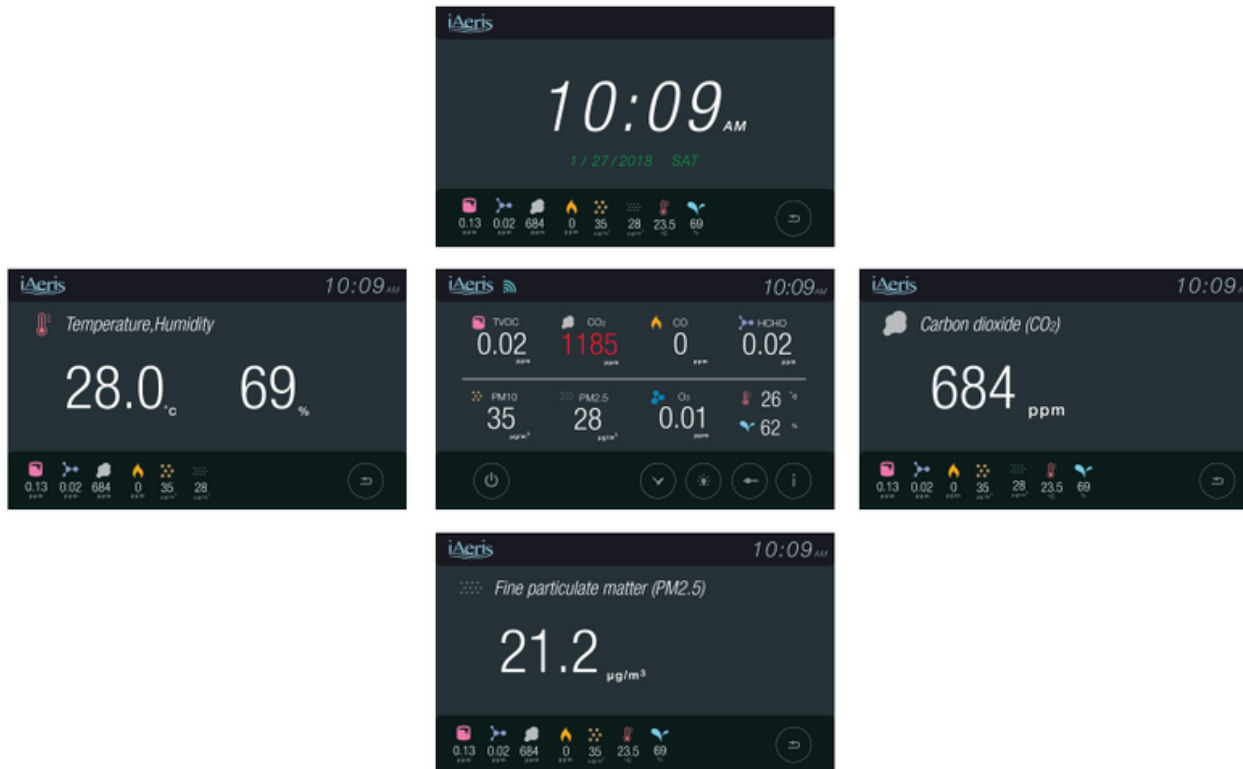
Cancel

Accept

Set the warning level with various indexes

■ Changing display theme

Tap the time or individual index icon to change the theme of the main form screen



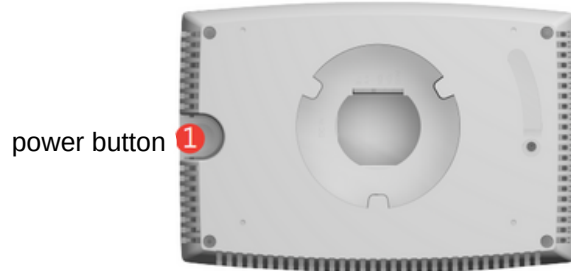
WiFi Setup Process (For WiFi Model)



1. Connect your iAeris device

1.

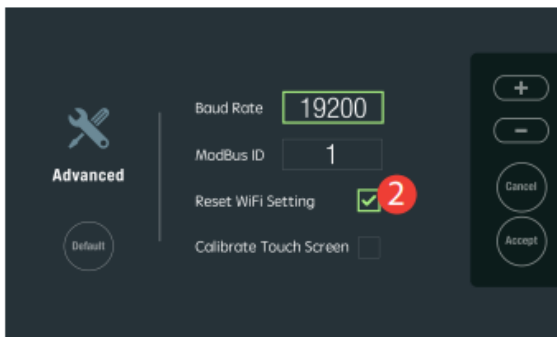
Press and hold power button for 10 seconds to access iAeris advanced settings.



power button 1

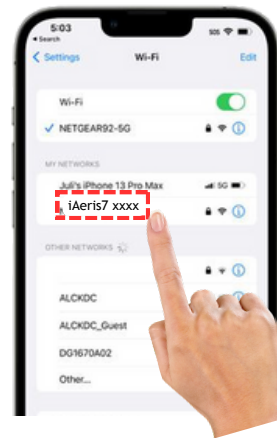
2.

In advanced settings, check "Reset WiFi Setting," then click OK. iAeris will restart and enter WiFi setup mode.



3.

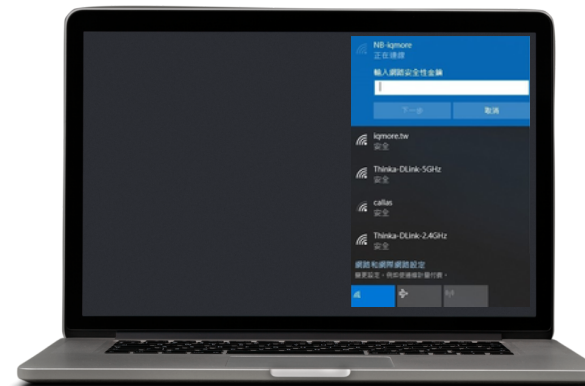
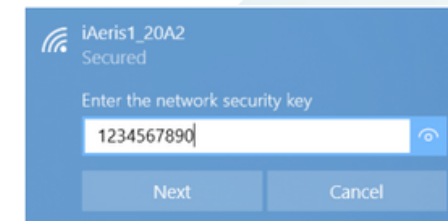
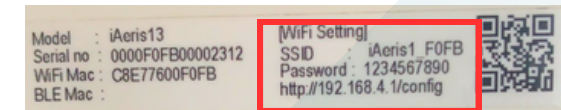
Open your computer or phone's WiFi search, locate the iAeris device with the name displayed on the sticker attached to the back of the main unit.



WiFi hotspot name on sticker at back.

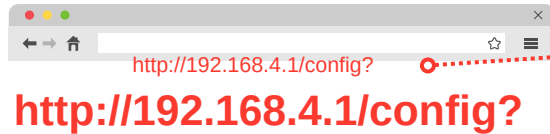
SSID: iAeris_XXXX

Password 1234567890



WiFi Setup Process (For WiFi Model)

2. Use computer or phone browser



1. Enter `http://192.168.4.1/config?` in address bar for settings.

2. Choose the WiFi AP you want to connect to.

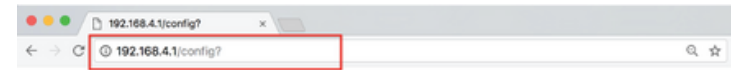
! Note: The displayed AP is the user's WiFi AP. "sysinno-test" is just an example

3. Enter the password.

! Note: Enter your WiFi AP password, not the iAeris1 hotspot password "1234567890".

4. Check options: Upload Cloud / ModBus-TCP / DHCP. See right for details.

5. Once settings are complete, click "Accept."



iAeris WiFi Setting

Scan WiFi AP: sysinno-test

Enter SSID: sysinno-test

Enter Password:

Upload Cloud ModBus-TCP

DHCP

Accept

Upload Cloud

Check the box to allow external network connection and data upload to the cloud platform

ModBus-TCP

Check the box to enable Modbus-TCP communication (Port 520).

DHCP

Check DHCP to receive IP from AP/Route

DHCP

Uncheck DHCP, assign fix IP settings screen

IP Address: 192.168.0.200

Gateway: 192.168.0.1

Subnet Mask: 255.255.255.0

WiFi Setup Process (For WiFi Model)

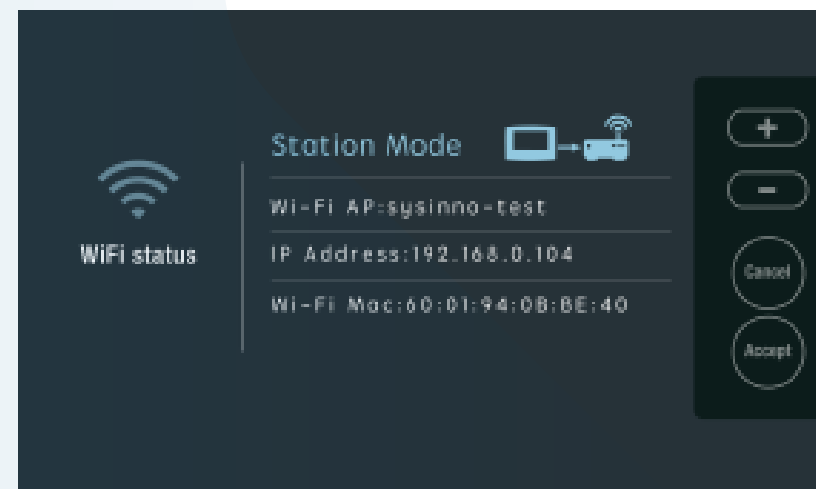
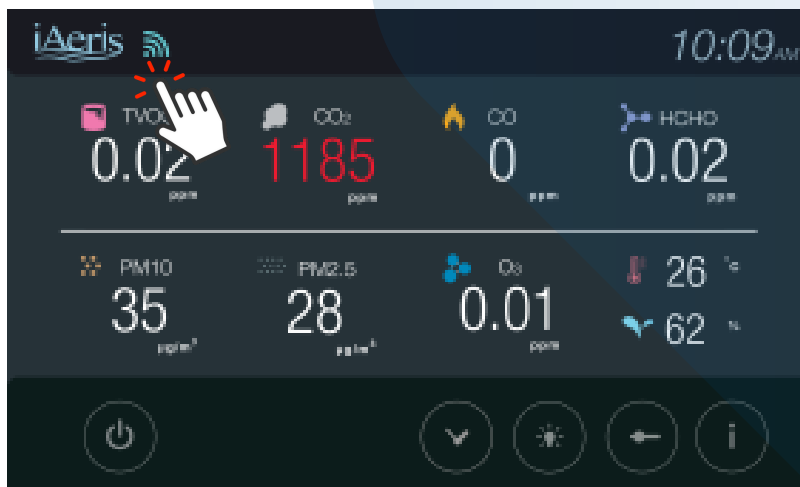
6. The system will restart when finish the setting process

6 IAQ WiFi Setting

Please Wait Device Reboot!!

7. After setup, device restarts. Click WiFi button for status.

8. WiFi status page shows connection info. If "NG," redo step 1.



Cloud Platform Interface (Optional)

Go to <https://xsize.net/iaeris/login.php> in your browser.



Cloud Platform Interface (Optional)

Register Account



iAeris
Air Quality
Monitor

中文 Login Register

Register account

Account, registered email address

Password, 10 or more English, Number...

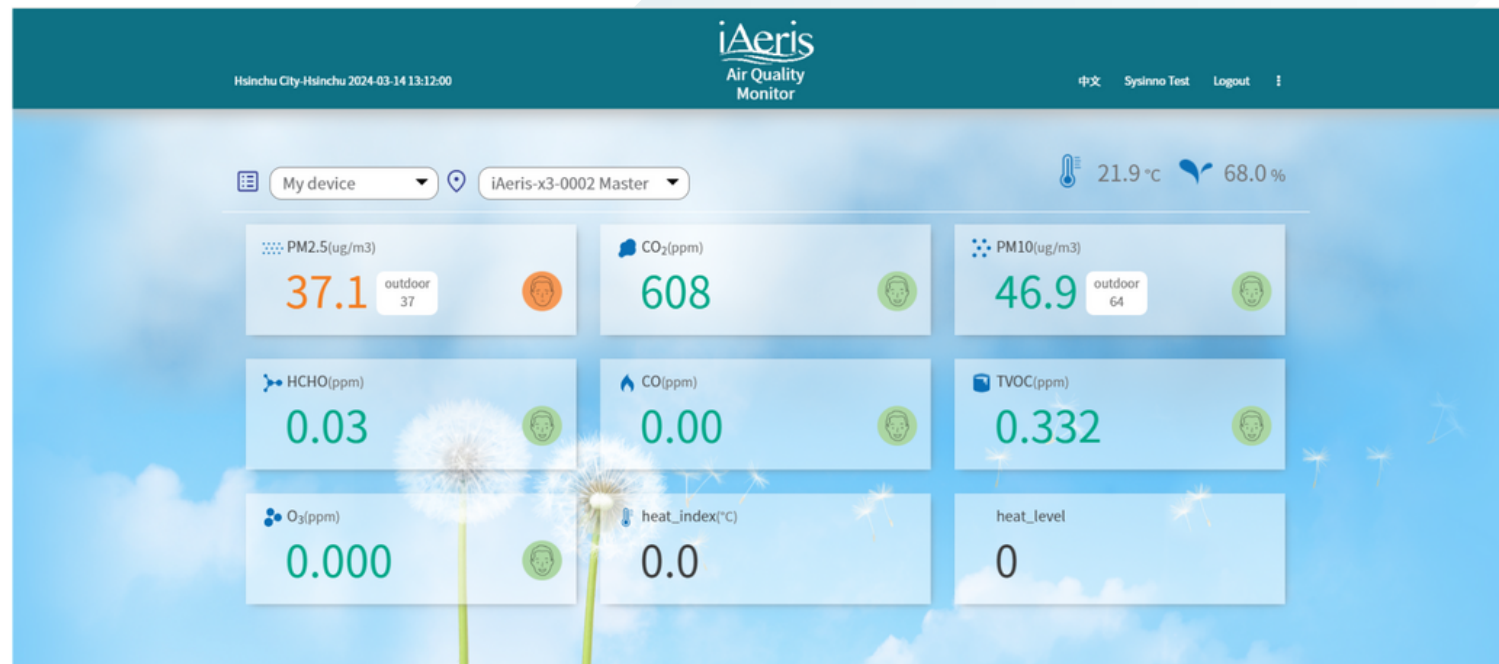
Confirm the password and enter the password

Member name, please enter a name

please select monitor type

Cloud Platform Login Homepage

- After registration and login, view the environmental detection values of the selected device
- Data uploads to the cloud platform every six minutes



Historical Data Trend Curve

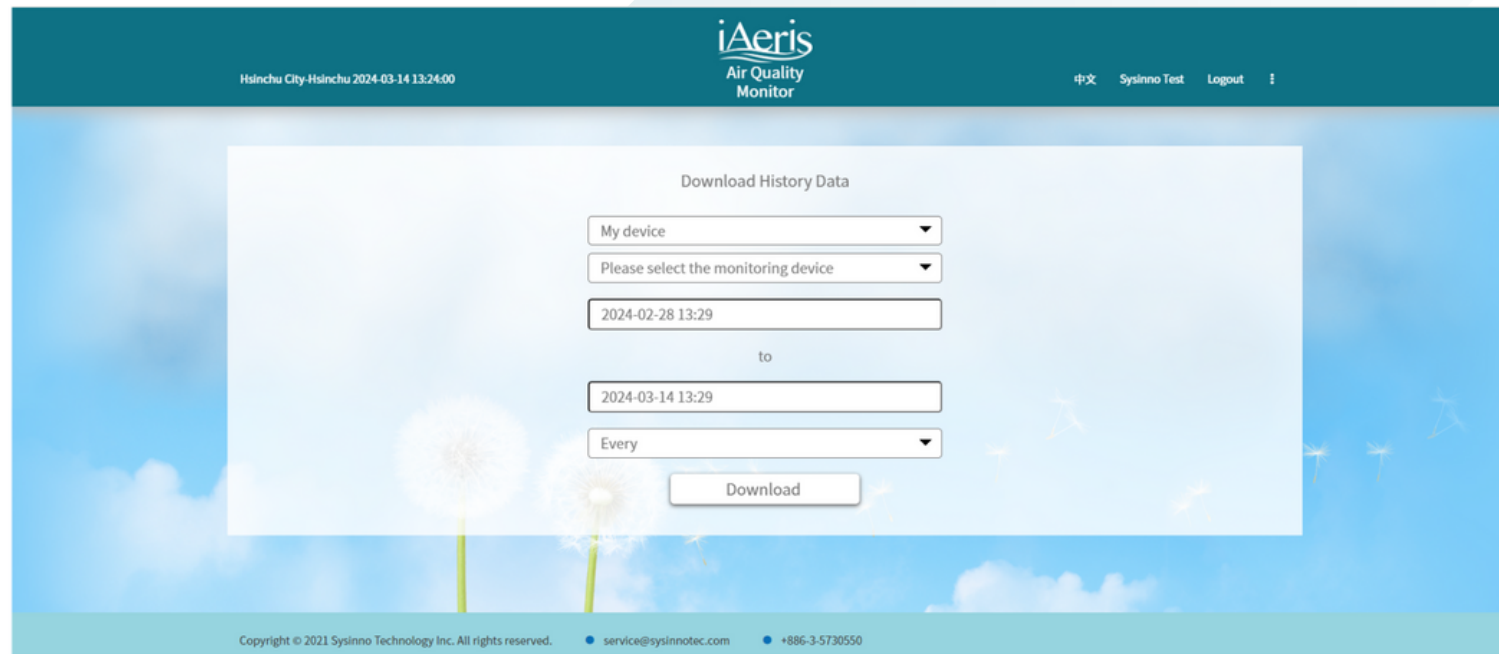
- Click "Environmental Factors" on the homepage to access the historical curve interface.

- This page shows hourly averages and up to seven days of data.



Customer Area Functionality

- The cloud platform provides customer-oriented features for easy data recording and management.
- Before service expires, contact the device vendor to purchase additional usage years for continued data download functionality.



The screenshot displays the 'iAeris Air Quality Monitor' web interface. The header includes the location 'Hsinchu City-Hsinchu' and the date '2024-03-14 13:24:00'. The main content area is titled 'Download History Data' and contains the following form elements:

- A dropdown menu labeled 'My device' with a downward arrow.
- A dropdown menu labeled 'Please select the monitoring device' with a downward arrow.
- A text input field containing the date '2024-02-28 13:29'.
- The word 'to' centered between two date input fields.
- A text input field containing the date '2024-03-14 13:29'.
- A dropdown menu labeled 'Every' with a downward arrow.
- A 'Download' button.

The footer contains the following text: 'Copyright © 2021 Sysinno Technology Inc. All rights reserved. • service@sysinnotec.com • +886-3-5730550'.

Installation Position Recommendations

For accuracy, we recommend installing one detector for every 200 square meters of enclosed space.

For example:

- Each open space of 200 square meters requires one detector.
 - Each individual partitioned meeting room or space requires one detector.
 - For spaces larger than 200 square meters, consider installing multiple detectors throughout the entire area to achieve optimal coverage.
 - Detectors should be installed near indoor areas where people are active or near ventilation (air conditioning) equipment return air vents.
 - Detector placement should be away from operable doors, windows, and air conditioning vents, at least 2 meters away.
-
- We recommend installing the detector at a height of 1.5 meters to 2.5 meters.
 - Position the detector at least 2 meters away from doors, windows, and air vents.
 - Ensure that the device's ventilation holes are not obstructed, allowing for proper airflow.
 - To ensure accuracy and longevity, ceiling-mounted installation on the ceiling is not recommended.

Precautions

- This product provides general indoor air quality information only and is not intended to determine individual health impacts or serve as a fire alarm.
- Keep the product away from heat sources and areas prone to water splashes or dripping.
- Avoid using the product in environments with vibrations or direct sunlight.
- Ensure proper airflow by not blocking the ventilation holes around the device.
- Do not insert external objects into the ventilation holes to prevent sensor malfunction or electric shock.
- Non-technical personnel should not attempt to disassemble, modify, or repair the product.
- Use correct connectors and cables during installation and avoid forcing connectors into ports to prevent damage not covered by warranty.

【Attention】 Power Supply Notice:

This product is powered by the included power adapter.

Power Supply Specifications:

Adapter outputs 5V DC with Jeck (Ø2.5mm) connector. Do not modify cable to avoid damage.

Dry Contact Specifications:

This product offers two independent dry contacts (NO1, NO2), rated for DC 24V, 0.5A. Ensure voltage at NO1 and NO2 is higher than at COM. Do not use with AC directly; use relay for high-voltage equipment.

Prohibition of Hot Wiring:

When changing power and port terminals, ensure power is disconnected before wiring. Reconnect after setup.

【 Attention 】

- This product supports energy recovery ventilation (ERV) and single-directional intake fans. Before purchasing, consult local distributors for compatibility and technical support.
- The control logic for RS485 or dry contact output is fixed and intended only for ventilation equipment control.

Use the correct connectors and ports

- Avoid forcing connections. Check for obstructions. Ensure proper alignment.
- Damage from mishandling, like inserting wrong pins, isn't covered by warranty.